

CAT.

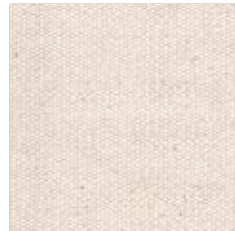
|   |  |   |
|---|--|---|
| A | TESSUTO  | FABRIC - TISSU - STOFF - TELA   |
| A | FINTA PELLE  | SIMIL LEATHER - SIMILICUIR - KUNSTLEDER - POLIPIEL  |
| B | TESSUTO  | FABRIC - TISSU - STOFF - TELA   |
| C |  FINTA PELLE IGNIFUGA | FIRE RETARDANT SIMIL LEATHER - SIMILICUIR NON-FEU - FEUERHEMMENDES KUNSTLEDER - POLIPIEL IGNÍFUGA |
| C |  LANA IGNIFUGA        | FIRE RETARDANT WOOL - LAINE NON-FEU - FEUERHEMMENDE WOLLE - LANA IGNÍFUGA                         |
| C |  TESSUTO IGNIFUGO     | FIRE RETARDANT FABRIC - TISSU NON-FEU - FEUERHEMMENDER STOFF - TELA IGNÍFUGA                      |
| D |  TESSUTO              | FABRIC - TISSU - STOFF - TELA   |
| F | CUOIO NATURALE   | GENUINE LEATHER - CUIR NATUREL - KERNLEDER - CUERO NATURAL  |
| F | CUOIO RIGENERATO   | REGENERATED LEATHER - CUIR RECONSTITUE - REGENERIERTES LEDER - REGENERADO DE CUERO                |
| G |  TESSUTO IGNIFUGO     | FIRE RETARDANT FABRIC - TISSU NON-FEU - FEUERHEMMENDER STOFF - TELA IGNÍFUGA                      |
| H |  FINTA PELLE IGNIFUGA | FIRE RETARDANT SIMIL LEATHER - SIMILICUIR NON-FEU - FEUERHEMMENDES KUNSTLEDER - POLIPIEL IGNÍFUGA |
| H |  VELLUTO IGNIFUGO     | FIRE RETARDANT VELVET - VELOURS NON-FEU - FEUERHEMMENDER VELOURS - TERCIOPELO IGNÍFUGO            |
| H |  TESSUTO IGNIFUGO     | FIRE RETARDANT FABRIC - TISSU NON-FEU - FEUERHEMMENDER STOFF - TELA IGNÍFUGA                      |
| P | PELLE MEZZO FIORE  | MID GRAIN LEATHER - CUIR MI-FLEUR - VOLLLEDER - PIEL MEDIA FLOR                                   |

# CATEGORIA A

TESSUTO - FABRIC - TISSU - STOFF - TELA

**PEDRALI**<sup>®</sup>

A 10



A 11



A 12



A 13



A 14



Pasha  
Art. 660.8



## CATEGORIA A

TESSUTO  
FABRIC  
TISSU  
STOFF  
TELA

CATEGORIA A - CATEGORY A - CATEGORIE A - KATEGORIE A - CATEGORIA A

COMPOSIZIONE  
COMPOSITION  
COMPOSITION  
STOFFZUSAMMENSETZUNG  
COMPOSICIÓN

100% CO

RESISTENZA ALL'ABRASIONE - UNI EN ISO 12947-2:2000  
ABRASION RESISTANCE - UNI EN ISO 12947-2:2000  
RESISTANCE A L'ABRASION - UNI EN ISO 12947-2:2000  
ABRIEBBESTÄNDIGKEIT - UNI EN ISO 12947-2:2000  
RESISTENCIA A LA ABRASION - UNI EN ISO 12947-2:2000

≥ 20.000 cicli  
≥ 20.000 cycles  
≥ 20.000 cycles  
≥ 20.000 Zyklen  
≥ 20.000 ciclos

RESISTENZA ALLO SFREGAMENTO  
FRICTION STRENGHT  
RESISTANCE AU FROTTEMENT  
SCHEUERFESTIGKEIT  
RESISTENCIA A LA FROTACION

UNI EN ISO 105 B02 > 4

RESISTENZA ALLA LUCE ARTIFICIALE  
COLOUR FASTNESS TO ARTIFICIAL LIGHT  
TENUE A LA LUMIERE  
LICHTBESTÄNDIGKEIT  
RESISTENCIA A LA LUZ ARTIFICIAL

Soddisfatto UNI EN ISO 105x12 - gradi 4 su gradi 5 max  
Complied with UNI EN ISO 105x12 - degress 4 on degress 5 max  
Réponse favorable au UNI EN ISO 105x12 - grés 4, sur grés 5 max  
UNI EN ISO 105x12 - 4 Grade, 5 max  
UNI EN ISO 105x12 - 4 grados, 5 max

LAVAGGIO  
CLEANING  
ENTRETIEN  
REINIGEN  
LAVADO

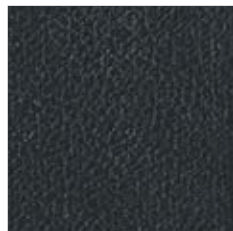
Pulire con acqua calda e un panno umido. Non usare detersivi, solventi, candeggianti, abrasivi.  
Clean with warm and damp cloth. Do not use detergents, solvents, bleached, abrasives.  
Nettoyer avec de l'eau chaude et un chiffon humide.  
Ne pas employer de détergents, solvants, blanchisseurs, abrasifs.  
Reinigen mit einem feuchten Tuch. Kein Wasch-, Lösungs-, Bleich- und Abreibungsmittel benutzen.  
Limpiar con agua caliente y con trapo húmedo. No utilizar detergente, solvente, decolorante y agente abrasivo.

# CATEGORIA A

FINTA PELLE - SIMIL LEATHER - SIMILICUIR - KUNSTLEDER - POLIPIEL

**PEDRALI**<sup>®</sup>

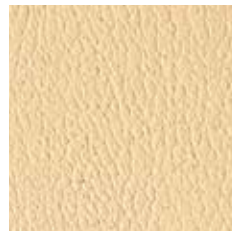
A 95



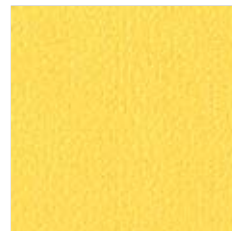
A 96



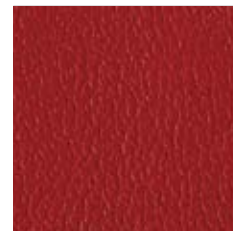
A 72



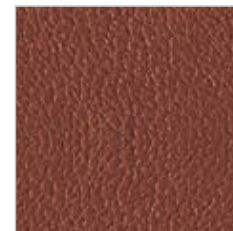
A 73



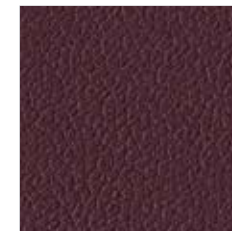
A 82



A 71



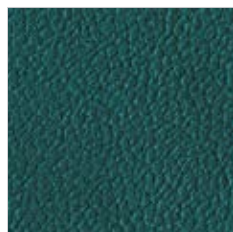
A 70



A 80



A 89



## CATEGORIA A

FINTA PELLE  
SIMIL LEATHER  
SIMILICUIR  
KUNSTLEDER  
POLIPIEL

CATEGORIA A - CATEGORY A - CATEGORIE A - CATEGORIE A - CATEGORIA A

COMPOSIZIONE  
COMPOSITION  
COMPOSITION  
STOFFZUSAMMENSETZUNG  
COMPOSICIÓN

66% CO - 18% PC - 16% PU

RESISTENZA ALL'ABRASIONE - Metodo Martindale  
ABRASION RESISTANCE - Method Martindale  
RESISTANCE A L'ABRASION - Méthod Martindale  
ABRIEBBESTÄNDIGKEIT - Verfahren Martindale  
RESISTENCIA A LA ABRASION - Método Martindale

40.000 cicli  
40.000 cycles  
40.000 cycles  
40.000 Zyklen  
40.000 ciclos

RESISTENZA ALLA LUCE ARTIFICIALE  
COLOUR FASTNESS TO ARTIFICIAL LIGHT  
TENUE A LA LUMIERE  
LICHTBESTÄNDIGKEIT  
RESISTENCIA A LA LUZ ARTIFICIAL

Soddisfatto Xenotest gradi 6 su gradi 8 max  
Complied with Xenotest degrees 6 on degrees 8 max  
Réponse favorable au Xenotest grés 6, grés 8 max  
Xenotest bestanden 6 Grade auf 8 Grade max  
Cumple con el Xenotest grados 6, grados 8 max

LAVAGGIO  
CLEANING  
ENTRETIEN  
REINIGEN  
LAVADO

Pulire con acqua calda e un panno umido. Non usare detersivi, solventi, candeggianti, abrasivi.  
Clean with warm and damp cloth. Do not use detergents, solvents, bleached, abrasives.  
Nettoyer avec de l'eau chaude et un chiffon humide. Ne pas employer de détergents, solvants, blanchisseurs, abrasifs  
Reinigen mit einem feuchten Tuch. Kein Wasch-, Lösungs-, Bleich- und Abreibungsmittel benutzen.  
Limpiar con agua caliente y con trapo húmedo. No utilizar detergente, solvente, decolorante y agente abrasivo.

# CATEGORIA B

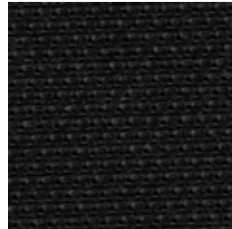
TESSUTO - FABRIC - TISSU - STOFF - TELA

**PEDRALI**<sup>®</sup>

B 01



B 02



## CATEGORIA B

TESSUTO  
FABRIC  
TISSU  
STOFF  
TELA

CATEGORIA B - CATEGORY B - CATEGORIE B - KATEGORIE B - CATEGORIE B - CATEGORIE B

COMPOSIZIONE  
COMPOSITION  
COMPOSITION  
STOFFZUSAMMENSETZUNG  
COMPOSICIÓN

RESISTENZA ALL'ABRASIONE - Metodo Martindale  
ABRASION RESISTANCE - Method Martindale  
RESISTANCE A L'ABRASION - Méthod Martindale  
ABRIEBBESTÄNDIGKEIT - Verfahren Martindale  
RESISTENCIA A LA ABRASION - Método Martindale

RESISTENZA ALLO SFREGAMENTO  
FRICTION STRENGHT  
RESISTANCE AU FROTTEMENT  
SCHEUERFESTIGKEIT  
RESISTENCIA A LA FROTACION

RESISTENZA ALLA LUCE ARTIFICIALE  
COLOUR FASTNESS TO ARTIFICIAL LIGHT  
TENUE A LA LUMIERE  
LICHTBESTÄNDIGKEIT  
RESISTENCIA A LA LUZ ARTIFICIAL

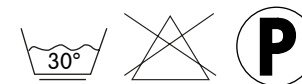
LAVAGGIO  
CLEANING  
ENTRETIEN  
REINIGEN  
LAVADO

100% Nylon  
(Support film PVC)

50.000 cicli  
50.000 cycles  
50.000 cycles  
50.000 Zyklen  
50.000 ciclos

5 (UNI EN ISO 105 X12:97)

Soddisfatto Xenotest gradi 5 su gradi 8 max  
Complied with Xenotest degrees 5 on degrees 8 max  
Réponse favorable au Xenotest grés 6, grés 8 max  
Xenotest bestanden 5 Grade auf 8 Grade max  
Cumple con el Xenotest grados 5, grados 8 max



# CATEGORIA C

FINTA PELLE IGNIFUGA - FIRE RETARDANT SIMIL LEATHER - SIMILICUIR NON-FEU - FEUERHEMMENDES KUNSTLEDER - POLIPIEL IGNÍFUGA

# PEDRALI®

C 18



C 11



C 12



C 13



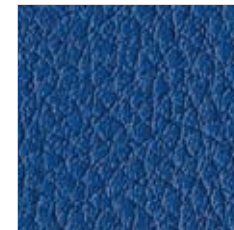
C 15



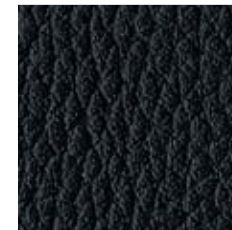
C 19



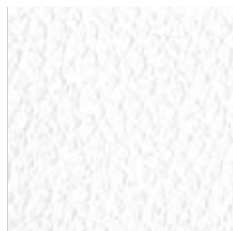
C 10



C 17



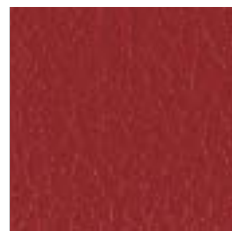
C 14



C 21



C 20



C 22







## CATEGORIA C

FINTA PELLE IGNIFUGA  
FIRE RETARDANT SIMIL LEATHER  
SIMILICUIR NON-FEU  
FEUERHEMMENDES KUNSTLEDER  
POLIPIEL IGNÍFUGA

CATEGORIA C - CATEGORY C - CATEGORIE C - KATEGORIE C - CATEGORIA C

COMPOSIZIONE  
COMPOSITION  
COMPOSITION  
STOFFZUSAMMENSETZUNG  
COMPOSICIÓN

RESISTENZA ALL'ABRASIONE  
ABRASION RESISTANCE  
RESISTANCE A L'ABRASION  
ABRIEBBESTÄNDIGKEIT  
RESISTENCIA A LA ABRASION

RESISTENZA ALLA LUCE ARTIFICIALE  
COLOUR FASTNESS TO ARTIFICIAL LIGHT  
TENUE A LA LUMIERE  
LICHTBESTÄNDIGKEIT  
RESISTENCIA A LA LUZ ARTIFICIAL



LAVAGGIO  
CLEANING  
ENTRETIEN  
REINIGEN  
LAVADO

Pulire con un panno umido. Per le macchie ostinate utilizzare un sapone neutro. Non usare detersivi, solventi, candeggianti, abrasivi.  
Clean with warm and damp cloth. More difficult stains can be removed with neutral soap.  
Do not use detergents, solvents, bleached, abrasives.  
Nettoyer avec de l'eau chaude et un chiffon humide. Pour les taches persistantes utiliser un savon neutre.  
Ne pas employer de détergents, solvants, blanchisseurs, abrasifs.  
Reinigen mit einem feuchten Tuch. Neutralseife benutzen, um Schmutzflecken zu reinigen.  
Kein Wasch-, Lösungs-, Bleich- und Abreibungsmittel benutzen.  
Limpiar con trapo humedo. Utilizar jabón neutro para limpiar manchas.  
No utilizar detergentes, solventes, decolorantes y agentes abrasivos.

85% PVC - 15% CO

3.000 cicli (Metodo NFG 35 105)  
3.000 cycles (Method NFG 35 105)  
3.000 cycles (Méthod NFG 35 105)  
3.000 Zyklen (Verfahren NFG 35 105)  
3.000 ciclos (Método NFG 35 105)

Soddisfatto Xenotest gradi 6 su gradi 8 max  
Complied with Xenotest degrees 6 on degrees 8 max  
Réponse favorable au Xenotest grés 6, grés 8 max  
Xenotest bestanden 6 Grade auf 8 Grade max  
Cumple con el Xenotest grados 6, grados 8 max

|    |                   |
|----|-------------------|
| I  | EN 1021 Part 1&2  |
| GB | BS 5852 Crib N. 5 |
| F  | M1                |
| D  | DIN 4102 B2       |
| E  | M1                |

# CATEGORIA C

FINITA PELLE IGNIFUGA - FIRE RETARDANT SIMIL LEATHER - SIMILICUIR NON-FEU - FEUERHEMMENDES KUNSTLEDER - POLIPIEL IGNÍFUGA

# PEDRALI®

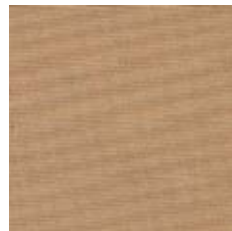
C 60



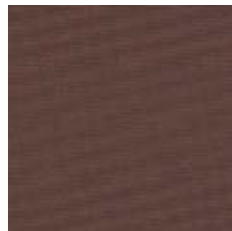
C 61



C 62



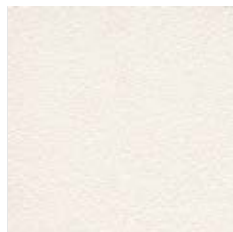
C 63



C 64



C 90



C 94



C 95



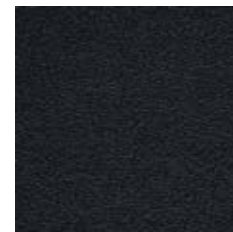
C 92



C 91



C 93





## CATEGORIA C

FINTA PELLE IGNIFUGA  
FIRE RETARDANT SIMIL LEATHER  
SIMILICUIR NON-FEU  
FEUERHEMMENDES KUNSTLEDER  
POLIPIEL IGNÍFUGA

CATEGORIA C - CATEGORY C - CATEGORIE C - KATEGORIE C - CATEGORIA C

COMPOSIZIONE  
COMPOSITION  
COMPOSITION  
STOFFZUSAMMENSETZUNG  
COMPOSICIÓN

72% PVC - 25% CO - 3% PU

RESISTENZA ALL'ABRASIONE - Metodo Martindale  
ABRASION RESISTANCE - Method Martindale  
RESISTANCE A L'ABRASION - Méthod Martindale  
ABRIEBBESTÄNDIGKEIT - Verfahren Martindale  
RESISTENCIA A LA ABRASION - Método Martindale

≥ 50.000 cicli  
≥ 50.000 cycles  
≥ 50.000 cycles  
≥ 50.000 Zyklen  
≥ 50.000 ciclos

RESISTENZA ALLA LUCE ARTIFICIALE  
COLOUR FASTNESS TO ARTIFICIAL LIGHT  
TENUE A LA LUMIERE  
LICHTBESTÄNDIGKEIT  
RESISTENCIA A LA LUZ ARTIFICIAL

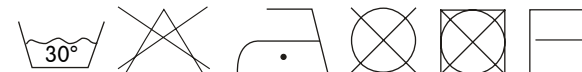
Soddisfatto Xenotest gradi 6 su gradi 8 max  
Complied with Xenotest degrees 6 on degrees 8 max  
Réponse favorable au Xenotest grés 6, grés 8 max  
Xenotest bestanden 6 Grade auf 8 Grade max  
Cumple con el Xenotest grados 6, grados 8 max



I  
GB

UNI 9175/87 e 9175 FA-1/94 Classe 1  
BS 5852 Crib N. 5  
EN 1021-2/93

LAVAGGIO  
CLEANING  
ENTRETIEN  
REINIGEN  
LAVADO

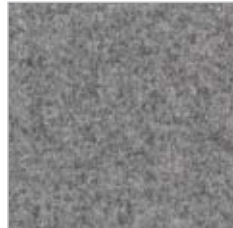


CATEGORIA C 

LANA IGNIFUGA - FIRE RETARDANT WOOL - LAINE NON-FEU - FEUERHEMMENDE WOLLE - LANA IGNÍFUGA

**PEDRALI**<sup>®</sup>

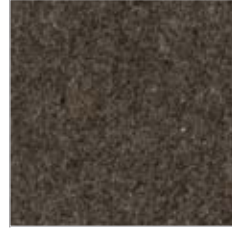
C 01



C 02



C 07



C 04



C 05



C 06



C 03





## CATEGORIA C

LANA IGNIFUGA  
FIRE RETARDANT WOOL  
LAINE NON-FEU  
FEUERHEMMENDE WOLLE  
LANA IGNÍFUGA

CATEGORIA C - CATEGORY C - CATEGORIE C - KATEGORIE C - CATEGORIA C

COMPOSIZIONE  
COMPOSITION  
COMPOSITION  
STOFFZUSAMMENSETZUNG  
COMPOSICIÓN

RESISTENZA ALL'ABRASIONE - Metodo Martindale  
ABRASION RESISTANCE - Method Martindale  
RESISTANCE A L'ABRASION - Méthod Martindale  
ABRIEBBESTÄNDIGKEIT - Verfahren Martindale  
RESISTENCIA A LA ABRASION - Método Martindale

RESISTENZA ALLA LUCE ARTIFICIALE  
COLOUR FASTNESS TO ARTIFICIAL LIGHT  
TENUE A LA LUMIERE  
LICHTBESTÄNDIGKEIT  
RESISTENCIA A LA LUZ ARTIFICIAL



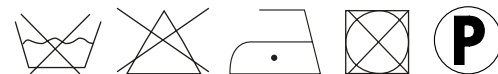
LAVAGGIO  
CLEANING  
ENTRETIEN  
REINIGEN  
LAVADO

80% Lana - 20% Poliammide  
80% Wool - 20% Polyamide  
80% Laine - 20% Polyamide  
80% Wolle - 20% Polyamid  
80% Lana virgen - 20% Poliamida

UNI EN ISO 12947:2000 - 100.000 cicli ± 20%  
UNI EN ISO 12947:2000 - 100.000 cycles ± 20%  
UNI EN ISO 12947:2000 - 100.000 cycles ± 20%  
UNI EN ISO 12947:2000 - 100.000 Zyklen ± 20%  
UNI EN ISO 12947:2000 - 100.000 ciclos ± 20%

Soddisfatto Xenotest UNI EN ISO 105 B02, 4±1  
Complied with Xenotest UNI EN ISO 105 B02, 4±1  
Réponse favorable au Xenotest UNI EN ISO 105 B02, 4±1  
Xenotest bestanden UNI EN ISO 105 B02, 4±1  
Cumple con el Xenotest UNI EN ISO 105 B02, 4±1

EN 1021 Part.1-2 using a CM Foam 35Kg/cu.m



# CATEGORIA C

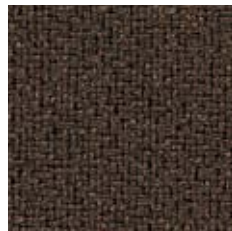
TESSUTO IGNIFUGO - FIRE RETARDANT FABRIC - TISSU NON-FEU - FEUERHEMMENDER STOFF - TELA IGNÍFUGA

# PEDRALI®

C 50



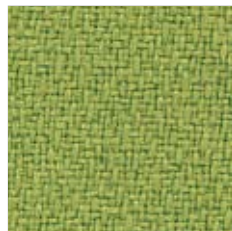
C 54



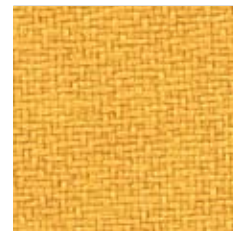
C 56



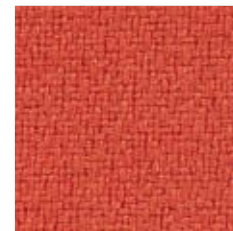
C 55



C 51



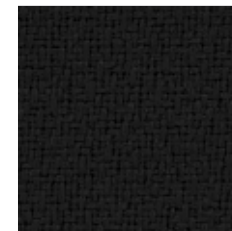
C 52



C 53



C 57





## CATEGORIA C

TESSUTO IGNIFUGO  
FIRE RETARDANT FABRIC  
TISSU NON-FEU  
FEUERHEMMENDER STOFF  
TELA IGNÍFUGA

CATEGORIA C - CATEGORY C - CATEGORIE C - KATEGORIE C - CATEGORIA C

COMPOSIZIONE  
COMPOSITION  
COMPOSITION  
STOFFZUSAMMENSETZUNG  
COMPOSICIÓN

RESISTENZA ALL'ABRASIONE - Metodo Martindale  
ABRASION RESISTANCE - Method Martindale  
RESISTANCE A L'ABRASION - Méthod Martindale  
ABRIEBBESTÄNDIGKEIT - Verfahren Martindale  
RESISTENCIA A LA ABRASION - Método Martindale

RESISTENZA ALLA LUCE ARTIFICIALE  
COLOUR FASTNESS TO ARTIFICIAL LIGHT  
TENUE A LA LUMIERE  
LICHTBESTÄNDIGKEIT  
RESISTENCIA A LA LUZ ARTIFICIAL



LAVAGGIO  
CLEANING  
ENTRETIEN  
REINIGEN  
LAVADO

100% PL FR TREVIRA CS

50.000 cicli ± 20%  
50.000 cycles ± 20%  
50.000 cycles ± 20%  
50.000 Zyklen ± 20%  
50.000 ciclos ± 20%

Soddisfatto Xenotest gradi 5±1 su gradi 8 max  
Complied with Xenotest degrees 5±1 on degrees 8 max  
Réponse favorable au Xenotest grés 5±1, grés 8 max  
Xenotest bestanden 5±1 Grade auf 8 Grade max  
Cumple con el Xenotest grados 5±1, grados 8 max

|    |                   |
|----|-------------------|
| I  | CLASSE 1          |
| GB | BS 5852 Crib N. 5 |
| F  | M1                |
| D  | B1 DIN 4102       |
| E  | M1                |



2013.10



# CATEGORIA C

TESSUTO IGNIFUGO - FIRE RETARDANT FABRIC - TISSU NON-FEU - FEUERHEMMENDER STOFF - TELA IGNÍFUGA

# PEDRALI®

C 75



C 76



C 77



Volt







## CATEGORIA C

TESSUTO IGNIFUGO  
FIRE RETARDANT FABRIC  
TISSU NON-FEU  
FEUERHEMMENDER STOFF  
TELA IGNÍFUGA

CATEGORIA C - CATEGORY C - CATEGORIE C - KATEGORIE C - CATEGORIA C

COMPOSIZIONE  
COMPOSITION  
COMPOSITION  
STOFFZUSAMMENSETZUNG  
COMPOSICIÓN

100% Polyester

RESISTENZA ALL'ABRASIONE - Metodo Martindale  
ABRASION RESISTANCE - Method Martindale  
RESISTANCE A L'ABRASION - Méthod Martindale  
ABRIEBBESTÄNDIGKEIT - Verfahren Martindale  
RESISTENCIA A LA ABRASION - Método Martindale

80.000 cicli  
80.000 cycles  
80.000 cycles  
80.000 Zyklen  
80.000 ciclos

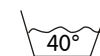
RESISTENZA ALLA LUCE ARTIFICIALE  
COLOUR FASTNESS TO ARTIFICIAL LIGHT  
TENUE A LA LUMIERE  
LICHTBESTÄNDIGKEIT  
RESISTENCIA A LA LUZ ARTIFICIAL

gradi 5, scala 1-8, max.8 - BS EN ISO 105 - B02



LAVAGGIO  
CLEANING  
ENTRETIEN  
REINIGEN  
LAVADO

EN 1021 1&2 - Calif. Tech. Bull. 117, sec. E. - Önorm B 3825/A 3800P1 - B2/Q1



# CATEGORIA C-G

TESSUTO IGNIFUGO - FIRE RETARDANT FABRIC - TISSU NON-FEU - FEUERHEMMENDER STOFF - TELA IGNÍFUGA

# PEDRALI®

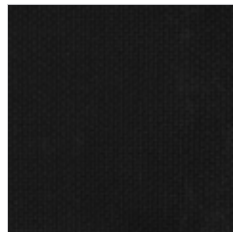
G 90



G 91



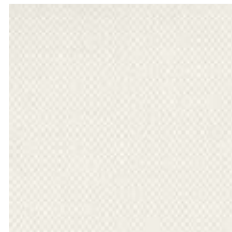
C 70



C 71



C 72



Blitz



Queen  
cat. G90-G91



Pasha





## CATEGORIA C-G

TESSUTO IGNIFUGO  
FIRE RETARDANT FABRIC  
TISSU NON-FEU  
FEUERHEMMENDER STOFF  
TELA IGNÍFUGA

CATEGORIA C-G - CATEGORY C-G - CATEGORIE C-G - KATEGORIE C-G - CATEGORIA C-G

COMPOSIZIONE  
COMPOSITION  
COMPOSITION  
STOFFZUSAMMENSETZUNG  
COMPOSICIÓN

G90-G91: 100% PES TREVIRA CS  
C70-C71-C72: 100% PES TREVIRA CS

RESISTENZA ALL'ABRASIONE - Metodo Martindale  
ABRASION RESISTANCE - Method Martindale  
RESISTANCE A L'ABRASION - Méthod Martindale  
ABRIEBBESTÄNDIGKEIT - Verfahren Martindale  
RESISTENCIA A LA ABRASION - Método Martindale

G90-G91: 20.000 cicli / cycles / Zyklen / ciclos  
C70-C71-C72: 30.000 cicli / cycles / Zyklen / ciclos

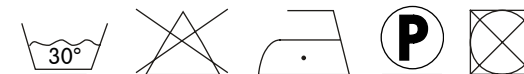
RESISTENZA ALLA LUCE ARTIFICIALE  
COLOUR FASTNESS TO ARTIFICIAL LIGHT  
TENUE A LA LUMIERE  
LICHTBESTÄNDIGKEIT  
RESISTENCIA A LA LUZ ARTIFICIAL

Soddisfatto Xenotest gradi 5 (G90-G91), gradi 5/6 (C70-C71-C72) su gradi 8 max  
Complied with Xenotest degrees 5 (G90-G91) on degrees 8 max  
Réponse favorable au Xenotest grés 5 (G90-G91), grés 8 max  
Xenotest bestanden 5 Grade (G90-G91) auf 8 Grade max  
Cumple con el Xenotest grados 5 (G90-G91), grados 8 max



I F D CLASSE 1  
M1  
B1 DIN 4102-1

LAVAGGIO  
CLEANING  
ENTRETIEN  
REINIGEN  
LAVADO



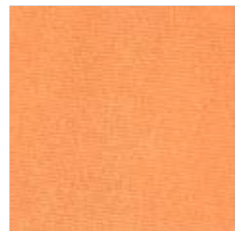
# CATEGORIA D



TESSUTO - FABRIC - TISSU - STOFF - TELA

# PEDRALI®

D 31



D 32



D 33



D 34



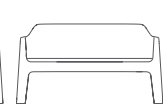
D 35



Plus



Plus Air





## CATEGORIA D

TESSUTO  
FABRIC  
TISSU  
STOFF  
TELA

CATEGORIA D - CATEGORY D - CATEGORIE D - KATEGORIE D - CATEGORIA D

COMPOSIZIONE  
COMPOSITION  
COMPOSITION  
STOFFZUSAMMENSETZUNG  
COMPOSICIÓN

RESISTENZA ALL'ABRASIONE - Metodo Martindale  
ABRASION RESISTANCE - Method Martindale  
RESISTANCE A L'ABRASION - Méthod Martindale  
ABRIEBBESTÄNDIGKEIT - Verfahren Martindale  
RESISTENCIA A LA ABRASION - Método Martindale

RESISTENZA ALLA LUCE ARTIFICIALE  
COLOUR FASTNESS TO ARTIFICIAL LIGHT  
TENUE A LA LUMIERE  
LICHTBESTÄNDIGKEIT  
RESISTENCIA A LA LUZ ARTIFICIAL



LAVAGGIO  
CLEANING  
ENTRETIEN  
REINIGEN  
LAVADO

100% Acrilico idrorepellente  
100% Acrylic waterproof  
100% Acrylique hydrofuge  
100% Acryl wasserabweisend  
100% Acrílico hidrófugo

25.000 cicli  
25.000 cycles  
25.000 cycles  
25.000 Zyklen  
25.000 ciclos

Soddisfatto Xenotest gradi 7 su gradi 8 max  
Complied with Xenotest degrees 7 on degrees 8 max  
Réponse favorable au Xenotest grés 7, grés 8 max  
Xenotest bestanden 7 Grade auf 8 Grade max  
Cumple con el Xenotest grados 7, grados 8 max



# CATEGORIA F

CUOIO NATURALE - GENUINE LEATHER - CUIR NATUREL - KERNLEDER - CUERO NATURAL

# PEDRALI®

F 05



F 01



F 04



F 03



F 06



F 07



F 08



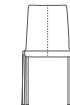
F 09



Gliss



Kuadra



Kuadra XL



Malmö



Mood



Woody



## CATEGORIA F

CUOIO NATURALE  
GENUINE LEATHER  
CUIR NATUREL  
KERNLEDER  
CUERO NATURAL

CATEGORIA F - CATEGORY F - CATEGORIE F - KATEGORIE F - CATEGORIA F

COMPOSIZIONE  
COMPOSITION  
COMPOSITION  
STOFFZUSAMMENSETZUNG  
COMPOSICIÓN

RESISTENZA ALLO SFREGAMENTO  
FRICTION STRENGHT  
RESISTANCE AU FROTTEMENT  
SCHEUERFESTIGKEIT  
RESISTENCIA A LA FROTACION

LAVAGGIO  
CLEANING  
ENTRETIEN  
REINIGEN  
LAVADO

Cuoio naturale, conciato con sostanze vegetali.  
Natural-Leder, pflanzlich geegerbt.  
Genuine leather, tanned with vegetable substances.  
Cuir Naturel, corroyé avec substances végétales.  
Cuero natural curtido con substancias vegetales.

Soddisfacente sino a max 700 abrasioni all'umido e 1000 abrasioni al secco.  
Satisfactory up to maximum 700 abrasions in humid environment and 1000 abrasions in dry environment.  
Valable jusqu'à un maximum de 700 abrasions à l'humide et 1000 abrasion au sèche.  
Max 700 Abriebe nass und 1000 Abriebe trocken.  
Cumple max con 700 abrasiones al humedo y 1000 abrasiones al seco.

Pulire con un panno umido d'acqua.  
Clean with an umid cloth in water.  
Nettoyer avec un chiffon humide d'eau.  
Reinigen mit durchfeuchtes Tuch und Neutralseife.  
Limpiar con un trapo húmedo de agua.

# CATEGORIA F

CUOIO RIGENERATO - REGENERATED LEATHER - CUIR RECONSTITUE - REGENERIERTES LEDER - REGENERADO DE CUERO

**PEDRALI**<sup>®</sup>

F 11



F 12



F 13



F 17



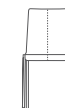
F 18



F 19



Kuadra



Kuadra XL



Malmö



Trend





## CATEGORIA F

CUOIO RIGENERATO  
REGENERATED LEATHER  
CUIR RECONSTITUE  
REGENERIERTES LEDER  
REGENERADO DE CUERO

CATEGORIA F - CATEGORY F - CATEGORIE F - KATEGORIE F - CATEGORIA F

COMPOSIZIONE  
COMPOSITION  
COMPOSITION  
STOFFZUSAMMENSETZUNG  
COMPOSICIÓN

RESISTENZA ALLO STRAPPO  
TEARS STRENGTH  
RESISTANCE AUX ACCROCS  
WEITERREISSWIDERSTAND  
RESISTENCIA AL DESGARRO

RESISTENZA ALLA LUCE ARTIFICIALE  
COLOUR FASTNESS TO ARTIFICIAL LIGHT  
TENUE A LA LUMIERE  
LICHTBESTÄNDIGKEIT  
RESISTENCIA A LA LUZ ARTIFICIAL

LAVAGGIO  
CLEANING  
ENTRETIEN  
REINIGEN  
LAVADO

Ritagli e rasatura di cuoio conciato legati con lattice di gomma naturale.  
Tanned leather cuttings and shavings linked with natural rubber lattex.  
Chutes et rasage de cuir tanné liés avec latex de gomme naturelle.  
Abschnitte und Späne aus gegerbtem Leder gebunden mit Latex von Naturkautschuk.  
Recortes y corte de cuero curtido unidos con latex de goma natural.

28 N (UNI ISO 3377)

Soddisfatto Xenotest: Scala di grigi gradi 5 su gradi 8 max.  
Scala di blu, gradi 6 su 8 max.  
Complied with Xenotest: greychromatic Scale degrees 5 on degrees 8 max.  
Blu chromatic Scale degrees 6 on degrees 8 max.  
Réponse favorable au Xenotest: echelle chromatique du gris grés 5, sur grés 8 max.  
Echelle chromatique du bleu grés 6, sur grés 8 max.  
Xenotest bestanden graufarbenfolge Grade 5, Grade 8 max.  
Blufarbenfolge Grade 6, Grade 8 max.  
Cumple con el Xenotest escala de grises grados 5, grados 8 max.  
escala de azules grados 6, grados 8 max.

Pulire con un panno umido d'acqua.  
Clean with an umid cloth in water.  
Nettoyer avec un chiffon humide d'eau.  
Reinigen mit durchfeuchtes Tuch und Neutralseife.  
Limpiar con un trapo húmedo de agua.

CATEGORIA G 

TESSUTO IGNIFUGO - FIRE RETARDANT FABRIC - TISSU NON-FEU - FEUERHEMMENDER STOFF - TELA IGNÍFUGA

**PEDRALI**<sup>®</sup>

G 07



G 06



G 09



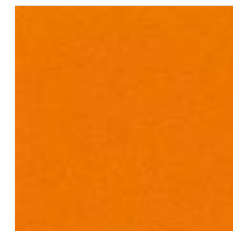
G 01



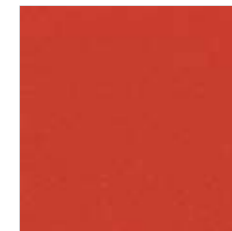
G 10



G 04



G 08





## CATEGORIA G

TESSUTO IGNIFUGO  
FIRE RETARDANT FABRIC  
TISSU NON-FEU  
FEUERHEMMENDER STOFF  
TELA IGNÍFUGA

CATEGORIA G - CATEGORY G - CATEGORIE G - KATEGORIE G - CATEGORIA G

COMPOSIZIONE  
COMPOSITION  
COMPOSITION  
STOFFZUSAMMENSETZUNG  
COMPOSICIÓN

RESISTENZA ALL'ABRASIONE - Metodo Martindale  
ABRASION RESISTANCE - Method Martindale  
RESISTANCE A L'ABRASION - Méthod Martindale  
ABRIEBBESTÄNDIGKEIT - Verfahren Martindale  
RESISTENCIA A LA ABRASION - Método Martindale

RESISTENZA ALLA LUCE ARTIFICIALE  
COLOUR FASTNESS TO ARTIFICIAL LIGHT  
TENUE A LA LUMIERE  
LICHTBESTÄNDIGKEIT  
RESISTENCIA A LA LUZ ARTIFICIAL



LAVAGGIO  
CLEANING  
ENTRETIEN  
REINIGEN  
LAVADO

80% PES - 20% PUR

45.000 cicli  
45.000 cycles  
45.000 cycles  
45.000 Zyklen  
45.000 ciclos

Soddisfatto Xenotest gradi 5 su gradi 8 max  
Complied with Xenotest degrees 5 on degrees 8 max  
Réponse favorable au Xenotest grés 5, grés 8 max  
Xenotest bestanden 5 Grade auf 8 Grade max  
Cumple con el Xenotest grados 5, grados 8 max

GB  
US MA  
US CA  
F

BS EN 1021  
NFPA 260  
Tech. Bull. 133  
MBS 5852 IG. S. 5

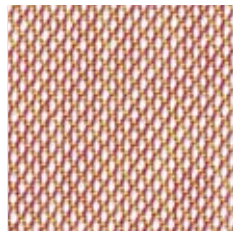


# CATEGORIA G

TESSUTO IGNIFUGO - FIRE RETARDANT FABRIC - TISSU NON-FEU - FEUERHEMMENDER STOFF - TELA IGNÍFUGA

# PEDRALI®

G 59



G 66



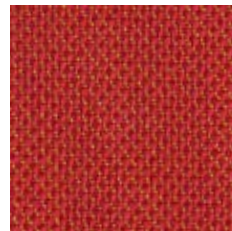
G 63



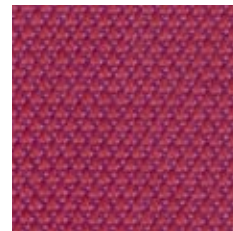
G 67



G 69



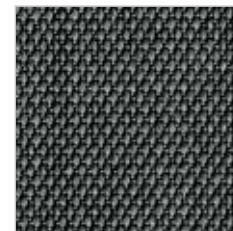
G 60



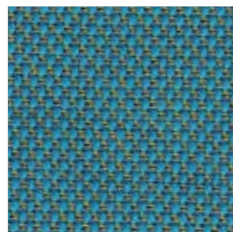
G 61



G 62



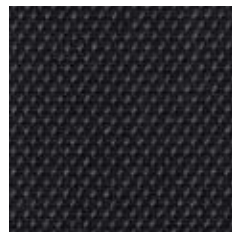
G 68



G 64



G 65





## CATEGORIA G

TESSUTO IGNIFUGO  
FIRE RETARDANT FABRIC  
TISSU NON-FEU  
FEUERHEMMENDER STOFF  
TELA IGNÍFUGA

CATEGORIA G - CATEGORY G - CATEGORIE G - KATEGORIE G - CATEGORIA G

COMPOSIZIONE  
COMPOSITION  
COMPOSITION  
STOFFZUSAMMENSETZUNG  
COMPOSICIÓN

RESISTENZA ALL'ABRASIONE - Metodo Martindale  
ABRASION RESISTANCE - Method Martindale  
RESISTANCE A L'ABRASION - Méthod Martindale  
ABRIEBBESTÄNDIGKEIT - Verfahren Martindale  
RESISTENCIA A LA ABRASION - Método Martindale

RESISTENZA ALLA LUCE ARTIFICIALE  
COLOUR FASTNESS TO ARTIFICIAL LIGHT  
TENUE A LA LUMIERE  
LICHTBESTÄNDIGKEIT  
RESISTENCIA A LA LUZ ARTIFICIAL



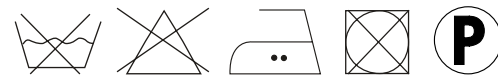
LAVAGGIO  
CLEANING  
ENTRETIEN  
REINIGEN  
LAVADO

90% Lana vergine, pettinata - 10% Nylon  
90% Worsted pure new wool - 10% Nylon  
90% Pure laine vierge cardée - 10% Nylon  
90% Gekämmte Feinwolle - 10% Nylon  
90% Pura lana peinada - 10% Nylon

80.000 cicli  
80.000 cycles  
80.000 cycles  
80.000 Zyklen  
80.000 ciclos

5-7 (ISO 1-8)  
5-7 (ISO 1-8)  
5-7 (ISO 1-8)  
5-7 (ISO 1-8)  
5-7 (ISO 1-8)

AS/NZS 3837, class 2  
BS 5852, ig. s. 2-3  
DIN 4102 B2, ÖNORM B1/Q1  
EN 1021-1/2  
NF D 60 013  
NFPA 260  
UNI 9175, classe 1  
US Cal. Tech. Bull. 117



CATEGORIA G 

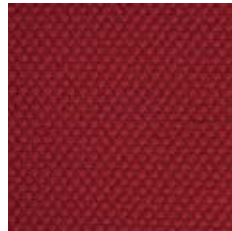
TESSUTO IGNIFUGO - FIRE RETARDANT FABRIC - TISSU NON-FEU - FEUERHEMMENDER STOFF - TELA IGNÍFUGA

**PEDRALI**<sup>®</sup>

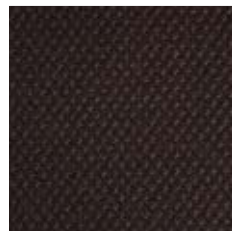
G 71



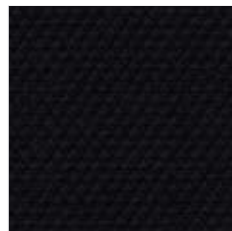
G 72



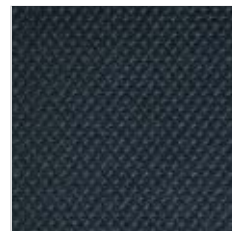
G 74



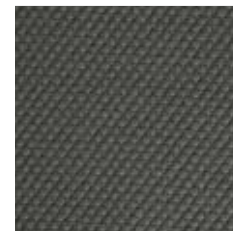
G 70



G 75



G 73





## CATEGORIA G

TESSUTO IGNIFUGO  
FIRE RETARDANT FABRIC  
TISSU NON-FEU  
FEUERHEMMENDER STOFF  
TELA IGNÍFUGA

CATEGORIA G - CATEGORY G - CATEGORIE G - KATEGORIE G - CATEGORIA G

COMPOSIZIONE  
COMPOSITION  
COMPOSITION  
STOFFZUSAMMENSETZUNG  
COMPOSICIÓN

RESISTENZA ALL'ABRASIONE - Metodo Martindale  
ABRASION RESISTANCE - Method Martindale  
RESISTANCE A L'ABRASION - Méthod Martindale  
ABRIEBBESTÄNDIGKEIT - Verfahren Martindale  
RESISTENCIA A LA ABRASION - Método Martindale

RESISTENZA ALLA LUCE ARTIFICIALE  
COLOUR FASTNESS TO ARTIFICIAL LIGHT  
TENUE A LA LUMIERE  
LICHTBESTÄNDIGKEIT  
RESISTENCIA A LA LUZ ARTIFICIAL



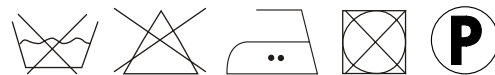
LAVAGGIO  
CLEANING  
ENTRETIEN  
REINIGEN  
LAVADO

90% Lana vergine, pettinata - 10% Nylon  
90% Worsted pure new wool - 10% Nylon  
90% Pure laine vierge cardée - 10% Nylon  
90% Gekämmte Feinwolle - 10% Nylon  
90% Pura lana peinada - 10% Nylon

80.000 cicli  
80.000 cycles  
80.000 cycles  
80.000 Zyklen  
80.000 ciclos

5-7 (ISO 1-8)  
5-7 (ISO 1-8)  
5-7 (ISO 1-8)  
5-7 (ISO 1-8)  
5-7 (ISO 1-8)

AS/NZS 3837, class 2  
BS 5852, ig. s. 2-3  
DIN 4102 B2, ÖNORM B1/Q1  
EN 1021-1/2  
NF D 60 013  
NFPA 260  
UNI 9175, classe 1  
US Cal. Tech. Bull. 117

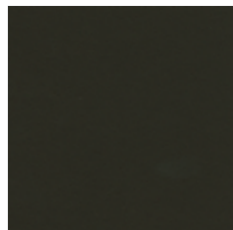


# CATEGORIA H

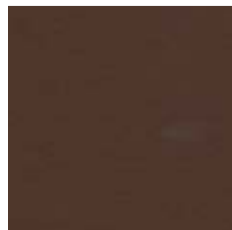
FINȚA PELLE IGNIFUGA - FIRE RETARDANT SIMIL LEATHER - SIMILICUIR NON-FEU - FEUERHEMMENDES KUNSTLEDER - POLIPIEL IGNÍFUGA

# PEDRALI®

H 30



H 29



H 28



H 27



H 24



H 22



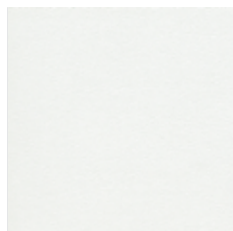
H 23



H 21



H 20



H 26



H 31



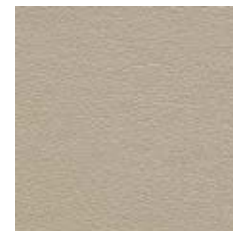
H 32



H 33



H 34



H 35







## CATEGORIA H

FINTA PELLE IGNIFUGA  
FIRE RETARDANT SIMIL LEATHER  
SIMILICUIR NON-FEU  
FEUERHEMMENDES KUNSTLEDER  
POLIPIEL IGNÍFUGA

CATEGORIA H - CATEGORY H - CATEGORIE H - KATEGORIE H - CATEGORIA H

COMPOSIZIONE  
COMPOSITION  
COMPOSITION  
STOFFZUSAMMENSETZUNG  
COMPOSICIÓN

63% PU - 37% CO

RESISTENZA ALL'ABRASIONE - Metodo Martindale  
ABRASION RESISTANCE - Method Martindale  
RESISTANCE A L'ABRASION - Méthod Martindale  
ABRIEBBESTÄNDIGKEIT - Verfahren Martindale  
RESISTENCIA A LA ABRASION - Método Martindale

150.000 cicli  
150.000 cycles  
150.000 cycles  
150.000 Zyklen  
150.000 ciclos

RESISTENZA ALLA LUCE ARTIFICIALE  
COLOUR FASTNESS TO ARTIFICIAL LIGHT  
TENUE A LA LUMIERE  
LICHTBESTÄNDIGKEIT  
RESISTENCIA A LA LUZ ARTIFICIAL

Soddisfatto Xenotest gradi 5/6 su gradi 8 max  
Complied with Xenotest degrees 5/6 on degrees 8 max  
Réponse favorable au Xenotest grés 5/6, grés 8 max  
Xenotest bestanden 5/6 Grade auf 8 Grade max  
Cumple con el Xenotest grados 5/6, grados 8 max



I UNI 9175/87 e 9175 FA-1/94 Classe 1  
GB BS EN 1021 2/93  
GB BS 5852 1/79 e 5852/90 Part. 4&5  
IMO Res. A. 652(16)/89

LAVAGGIO  
CLEANING  
ENTRETIEN  
REINIGEN  
LAVADO

Pulire con un panno umido d'acqua.  
Non usare detersivi, solventi, candeggianti, abrasivi.  
Clean with an umid cloth in water. Do not use detergents, solvents, bleached, abrasives.  
Nettoyer avec un chiffon humide d'eau. Ne pas employer de détergents, solvants, blanchisseurs, abrasifs.  
Reinigen mit durchfeuchtes Tuch und Neutralseife.  
Neutralseife benutzen, um Schmutzflecken zu reinigen. Kein Wasch-, Lösungs-, Bleich- und Abreibungsmittel benutzen.  
Limpiar con un trapo húmedo de agua. Utilizar jabón neutro para limpiar manchas.  
No utilizar detergentes, solventes, decolorantes y agentes abrasivos.

# CATEGORIA H

FINTA PELLE IGNIFUGA - FIRE RETARDANT SIMIL LEATHER - SIMILICUIR NON-FEU - FEUERHEMMENDES KUNSTLEDER - POLIPIEL IGNÍFUGA

# PEDRALI®

H 80



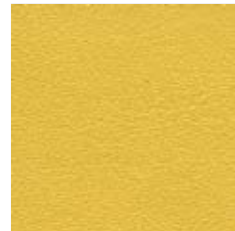
H 81



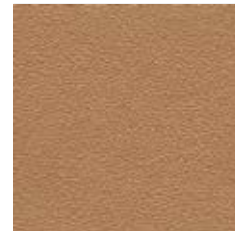
H 82



H 83



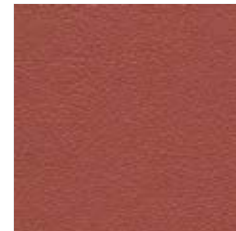
H 84



H 85



H 86



H 87



H 88



H 89



H 90





## CATEGORIA H

FINTA PELLE IGNIFUGA  
FIRE RETARDANT SIMIL LEATHER  
SIMILICUIR NON-FEU  
FEUERHEMMENDES KUNSTLEDER  
POLIPIEL IGNÍFUGA

CATEGORIA H - CATEGORY H - CATEGORIE H - KATEGORIE H - CATEGORIA H

COMPOSIZIONE  
COMPOSITION  
COMPOSITION  
STOFFZUSAMMENSETZUNG  
COMPOSICIÓN

RESISTENZA ALL'ABRASIONE - Metodo Martindale  
ABRASION RESISTANCE - Method Martindale  
RESISTANCE A L'ABRASION - Méthod Martindale  
ABRIEBBESTÄNDIGKEIT - Verfahren Martindale  
RESISTENCIA A LA ABRASION - Método Martindale

RESISTENZA ALLA LUCE ARTIFICIALE  
COLOUR FASTNESS TO ARTIFICIAL LIGHT  
TENUE A LA LUMIERE  
LICHTBESTÄNDIGKEIT  
RESISTENCIA A LA LUZ ARTIFICIAL

LAVAGGIO  
CLEANING  
ENTRETIEN  
REINIGEN  
LAVADO

63% PU - 37% CO

150.000 cicli  
150.000 cycles  
150.000 cycles  
150.000 Zyklen  
150.000 ciclos

Soddisfatto Xenotest gradi 5/6 su gradi 8 max  
Complied with Xenotest degrees 5/6 on degrees 8 max  
Réponse favorable au Xenotest grés 5/6, grés 8 max  
Xenotest bestanden 5/6 Grade auf 8 Grade max  
Cumple con el Xenotest grados 5/6, grados 8 max

I UNI 9175/87 e 9175 FA-1/94 Classe 1  
GB BS EN 1021 2/93  
GB BS 5852 1/79 e 5852/90 Part. 4&5  
IMO Res. A. 652(16)/89

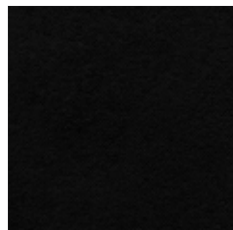
Pulire con un panno umido d'acqua.  
Non usare detersivi, solventi, candeggianti, abrasivi.  
Clean with an umid cloth in water. Do not use detergents, solvents, bleached, abrasives.  
Nettoyer avec un chiffon humide d'eau. Ne pas employer de détergents, solvants, blanchisseurs, abrasifs.  
Reinigen mit durchfeuchtes Tuch und Neutralseife.  
Neutralseife benutzen, um Schmutzflecken zu reinigen. Kein Wasch-, Lösungs-, Bleich- und Abreibungsmittel benutzen.  
Limpiar con un trapo húmedo de agua. Utilizar jabón neutro para limpiar manchas.  
No utilizar detergentes, solventes, decolorantes y agentes abrasivos.

# CATEGORIA H

VELLUTO IGNIFUGO - FIRE RETARDANT VELVET - VELOURS NON-FEU - FEUERHEMMENDER VELOURS - TERCIOPELO IGNÍFUGO

# PEDRALI®

H 41



H 40



H 44



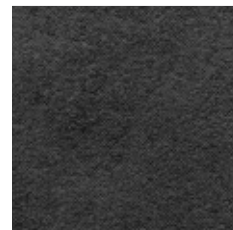
H 45



H 46



H 51



H 53



H 52



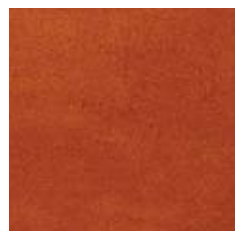
H 42



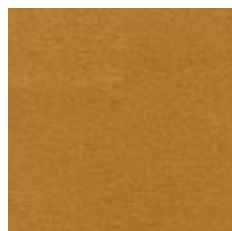
H 47



H 48



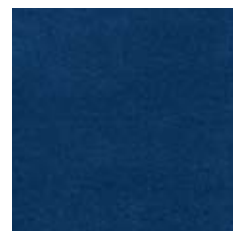
H 43



H 49



H 50





## CATEGORIA H

VELLUTO IGNIFUGO  
FIRE RETARDANT VELVET  
VELOURS NON-FEU  
FEUERHEMMENDER VELOURS  
TERCIOPELO IGNÍFUGO

CATEGORIA H - CATEGORY H - CATEGORIE H - KATEGORIE H - CATEGORIA H

COMPOSIZIONE  
COMPOSITION  
COMPOSITION  
STOFFZUSAMMENSETZUNG  
COMPOSICIÓN

RESISTENZA ALL'ABRASIONE - Metodo Martindale  
ABRASION RESISTANCE - Method Martindale  
RESISTANCE A L'ABRASION - Méthod Martindale  
ABRIEBBESTÄNDIGKEIT - Verfahren Martindale  
RESISTENCIA A LA ABRASION - Método Martindale

RESISTENZA ALLA LUCE ARTIFICIALE  
COLOUR FASTNESS TO ARTIFICIAL LIGHT  
TENUE A LA LUMIERE  
LICHTBESTÄNDIGKEIT  
RESISTENCIA A LA LUZ ARTIFICIAL



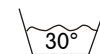
LAVAGGIO  
CLEANING  
ENTRETIEN  
REINIGEN  
LAVADO

100% TREVIRA CS ®

100.000 cicli  
100.000 cycles  
100.000 cycles  
100.000 Zyklen  
100.000 ciclos

Soddisfatto Xenotest gradi 5±1 su gradi 6 max  
Complied with Xenotest degrees 5±1 on degrees 6 max  
Réponse favorable au Xenotest grés 5±1, grés 6 max  
Xenotest bestanden 5±1 Grade auf 6 Grade max  
Cumple con el Xenotest grados 5±1, grados 6 max

I UNI 9177/87 CLASSE 1  
GB BS 5852/90  
F DIN 4102 CLASSE M1  
D DIN 4102/1 KLASSE B1Tech.  
US CA Bull. 117E  
INT. IMO res. A. 652 (16)

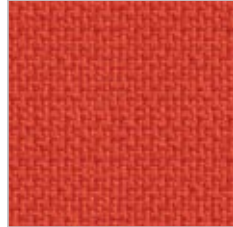


# CATEGORIA H

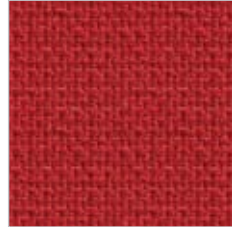
TESSUTO IGNIFUGO - FIRE RETARDANT FABRIC - TISSU NON-FEU - FEUERHEMMENDER STOFF - TELA IGNÍFUGA

**PEDRALI**<sup>®</sup>

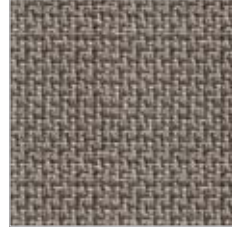
H 60



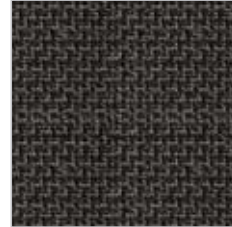
H 61



H 62



H 63





## CATEGORIA H

TESSUTO IGNIFUGO  
FIRE RETARDANT FABRIC  
TISSU NON-FEU  
FEUERHEMMENDER STOFF  
TELA IGNÍFUGA

CATEGORIA H - CATEGORY H - CATEGORIE H - KATEGORIE H - CATEGORIA H

COMPOSIZIONE  
COMPOSITION  
COMPOSITION  
STOFFZUSAMMENSETZUNG  
COMPOSICIÓN

RESISTENZA ALL'ABRASIONE - Metodo Martindale  
ABRASION RESISTANCE - Method Martindale  
RESISTANCE A L'ABRASION - Méthod Martindale  
ABRIEBBESTÄNDIGKEIT - Verfahren Martindale  
RESISTENCIA A LA ABRASION - Método Martindale

RESISTENZA ALLA LUCE ARTIFICIALE  
COLOUR FASTNESS TO ARTIFICIAL LIGHT  
TENUE A LA LUMIERE  
LICHTBESTÄNDIGKEIT  
RESISTENCIA A LA LUZ ARTIFICIAL



LAVAGGIO  
CLEANING  
ENTRETIEN  
REINIGEN  
LAVADO

92% Lana vergine - 8% Poliammide  
92% Pure new wool - 8% Polyamide  
92% Laine vierge - 8% Polyamide  
92% Rohwolle - 8% Polyamid  
92% Lana virgen - 8% Poliamida

200.000 cicli  
200.000 cycles  
200.000 cycles  
200.000 Zyklen  
200.000 ciclos

Soddisfatto Xenotest gradi 5 su gradi 8 max  
Complied with Xenotest degrees 5 on degrees 8 max  
Réponse favorable au Xenotest grés 5, grés 8 max  
Xenotest bestanden 5 Grade auf 8 Grade max  
Cumple con el Xenotest grados 5, grados 8 max

GB  
GB  
US CA

EN 1021 1&2  
BS 5852 0&1  
Calif. Bull. 117 E

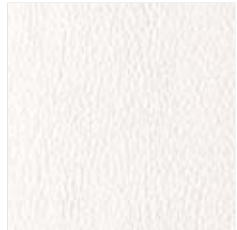


# CATEGORIA P

PELLE MEZZO FIORE - MID GRAIN LEATHER - CUIR MI-FLEUR - VOLLLEDER - PIEL MEDIA FLOR

**PEDRALI**®

PBI



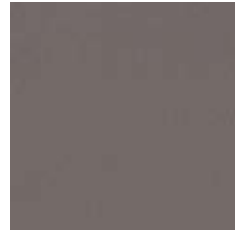
PSA



PGC



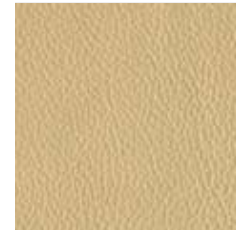
PGA



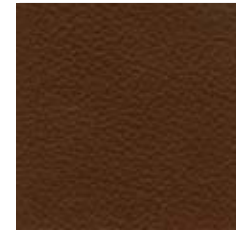
PGR



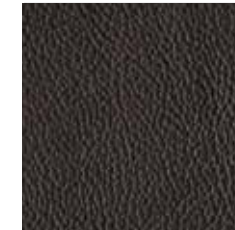
PBE



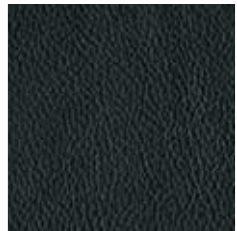
PTA



PMA



PNE



PRO





## CATEGORIA P

PELLE MEZZO FIORE  
MID GRAIN LEATHER  
CUIR MI-FLEUR  
VOLLEDER  
PIEL MEDIA FLOR

CATEGORIA P - CATEGORY P - CATEGORIE P - KATEGORIE P - CATEGORIA P

COMPOSIZIONE  
COMPOSITION  
COMPOSITION  
STOFFZUSAMMENSETZUNG  
COMPOSICIÓN

RESISTENZA ALLO SFREGAMENTO  
FRICTION STRENGHT  
RESISTANCE AU FROTTEMENT  
SCHEUERFESTIGKEIT  
RESISTENCIA A LA FROTACION

LAVAGGIO  
CLEANING  
ENTRETIEN  
REINIGEN  
LAVADO

Vera pelle, mezzo fiore  
Mid-Grain Leather  
Cuir Mi-Fleur  
Volleder  
Piel media flor

500 cicli  
500 cycles  
500 cycles  
500 Zyklen  
500 ciclos

Pulire con un panno umido d'acqua. Non usare detersivi, solventi, candeggianti, abrasivi.  
Clean with an umid cloth in water. Do not use detergents, solvents, bleached, abrasives.  
Nettoyer avec un chiffon humide d'eau. Ne pas employer de détergents, solvants, blanchisseurs, abrasifs.  
Reinigen mit durchfeuchtes Tuch und Neutralseife.. Neutralseife benutzen, um Schmutzflecken zu reinigen.  
Kein Wasch-, Lösungs-, Bleich- und Abreibungsmittel benutzen.  
Limpiar con un trapo húmedo de agua. Utilizar jabón neutro para limpiar manchas.  
No utilizar detergentes, solventes, decolorantes y agentes abrasivos